



*The story of wisdom  
no statistic will tell*

# Christian Heritage School

**2016-2017**  
UPPER SCHOOL PROFILE

At Christian Heritage School, the results of our hard work and dedication to our students are not measured in mere statistics or numbers, but in the prepared hearts and minds of our graduates. Our goal is not, after all, to build perfect children, but wise, thoughtful adults ready to take on the challenges of our next generation, ready to lead, to fight for what is good, to love rightly and to serve selflessly. Nevertheless, we believe the sharing of a few shiny numbers is in order.

*Educating Children to Serve Christ*



**Christian Heritage School** is a K-12, co-educational, college-preparatory, independent, Christian school that provides a purposeful education and encourages students to push their intellectual boundaries, resulting in innovative and creative contributions to society. Christian Heritage offers a Christ-centered worldview while providing **academics** that challenge, **athletics** that build, **arts** that inspire, and **active faith** that endures. Christian Heritage strives to build character, confidence, and integrity in every student. CHS promotes a rigorous academic environment and aspires to foster a passion for learning and achieving while equipping our students for college and beyond.

## DISTINCTIVES

### Problem- and Project-Based Learning

These methodologies represent a paradigm shift from traditional teaching and lecture based classrooms. They promote lifelong learning through the process of inquiry and engagement in complex, real-world projects. The goals are for students to develop depth of knowledge, effective collaborative and problem solving skills, and intrinsic motivation.



### Spirit of Entrepreneurialism

Christian Heritage teaches students to think outside the box and nurtures unconventional talents and skills, while instilling entrepreneurial confidence. As a result of this philosophy, our upper school students have developed several business ventures that give real entrepreneurial experience while also generating revenue that provides needs-based tuition assistance to CHS students.



### Harkness Method

Our students' future success will require that they be able to engage robustly in critical thinking and then persuasively articulate what they conclude. Writing and speaking clearly proceed from thinking clearly when students can assess disparate information and synthesize direct arguments for complex ideas. Such a learning environment is the Harkness Table,



where well-prepared students ask and answer questions, challenge ideas, and refine their own views under the guidance of an able teacher. The Harkness Table becomes a microcosm for a student's achievements later in a much larger arena.

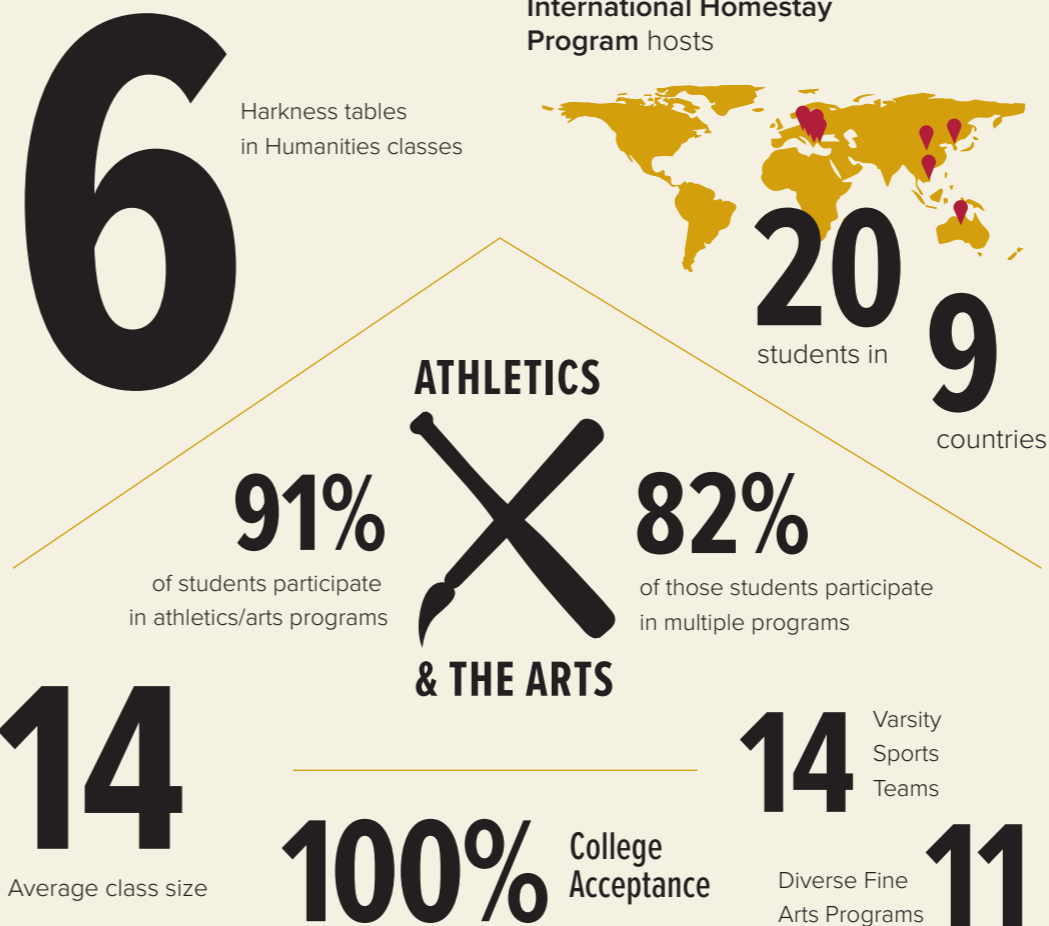
### STEM

Our state-of-the-art STEM facilities include a **makerspace** and **aquaponic greenhouses**. These innovative learning environments stimulate critical thinking, communication, collaboration, and creativity. Students explore textile development and manufacturing, 3D printing, product design, image manipulation, sustainable agriculture, alternative energy solutions, and more. Makerspaces and Aquaponic gardens bridge the gap between conceptual learning and hands-on understanding. The students are able to meet humanitarian needs in our community and globally, all while taking their academics for a test drive.



### Prefects

Prefects create impact within the school community via servant leadership and assume significant responsibilities in the daily life of the school. Prefects are seniors selected through a competitive application and interview process and who have shown a high degree of commitment to the school's values and ideals.



## SAT Scores

NATIONWIDE SAT SCORES

CHS Top 25%



Due to the new scoring system, complete comparative data is not yet available

648

Top 25% ERW Score

91<sup>st</sup>  
PERCENTILE

667

Top 25% Mathematics Score

## ACT Scores

Average Composite Score



0 21 28

78%

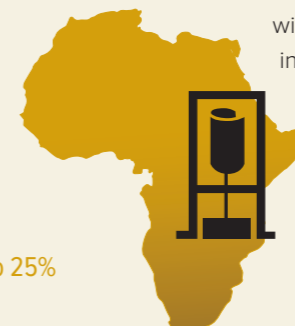
of current seniors have taken at least two AP exams

\$66,967

Average scholarship awarded per Class of 2016 student

2

Number of vertical-axis wind turbines installed in Siteki, Swaziland by the CHS Winds of Hope Team



Each turbine converts the wind's kinetic energy into electrical power thus creating an alternative and sustainable energy source.

Learn more at [chsions.com/windsofhope](http://chsions.com/windsofhope)

**2016-2017**  
UPPER SCHOOL PROFILE

## CHS Alumni College Acceptances And Matriculations

Abraham Baldwin Agricultural College  
 Art Institute of Atlanta  
 Armstrong Atlantic State University  
 Auburn University  
 Belmont University  
 Berry College  
 Brewton Parker College  
 Bryan College  
 Chattanooga State  
 Clemson University  
 College Of Charleston  
 Columbus State University  
 Covenant College  
 Dalton State College  
 Emory University (Oxford College)  
 Florida State University  
 Gainesville State College  
 Georgia College and State University  
 Georgia Coastal College  
 Georgia Institute of Technology  
 Georgia Southern University  
 Georgia Southwestern State University  
 Jacksonville State University  
 Kennesaw State University  
 LaGrange College  
 Lee University  
 Liberty University  
 Lincoln Memorial University  
 Louisiana State University  
 Mercer University  
 Middle Tennessee State University  
 Minnesota State University  
 Mississippi College  
 Mississippi State University  
 North Carolina State University  
 Piedmont College  
 Reinhardt University  
 Samford University  
 Shorter University  
 State University of NY  
 Toccoa Falls College  
 Truett McConnell College  
 Texas Christian University  
 Tusculum College  
 University of Alabama  
 University of Arizona  
 University of Georgia  
 University of Georgia Honors College  
 University of Mississippi  
 University of Missouri  
 University of North Georgia  
 University of Tennessee  
 University of Tennessee Chattanooga  
 UTC Honors College  
 University of the Cumberlands  
 University of West Georgia  
 Valdosta State University  
 Vanderbilt University  
 Virginia Military Institute  
 Warner University  
 Washington State University  
 Wesleyan College  
 Young Harris College

### Advance Placement (AP) Course Offerings

Calculus AB  
 Chemistry  
 English Language & Composition  
 English Literature & Composition  
 Macroeconomics  
 Physics 1: Algebra-based  
 U.S. Government & Politics  
 U.S. History  
 World History

### Grading Scale

<b>A</b>	90-100	
<b>B</b>	80 - 89	Advanced Placement, Dual
<b>C</b>	73 - 79	Enrollment, and Honors
<b>D</b>	70 - 72	courses receive an additional
<b>F</b>	Below 70	1.0 point increase.

### Graduation Requirements:

English.....	4
Social Science .....	4
Science .....	4
Mathematics .....	4
Health / P.E.....	1
Bible .....	4
Foreign Language.....	2
Electives .....	3
<b>Total Academic Units .....</b>	<b>26</b>

### Faculty Professional Affiliations

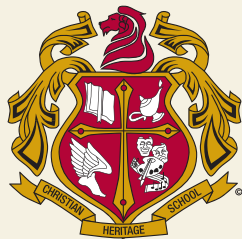
Alpha Delta Kappa, The Southern Association for College Counseling, Georgia Music Educators Association, Phi Beta Mu, Council of Exceptional Children, National Institute of Learning Development, American Council on the Teaching of Foreign Languages, Professional Association of Georgia Educators, National Council of Teachers of Mathematics

### Accreditations

AdvancED (formerly SACS)

### Affiliations

Georgia High School Association (GHSA)  
 Southern Association of Independent Schools (SAIS)



#### Christian Heritage School

1600 Martin Luther King Boulevard  
 Dalton, Georgia 30721  
 Phone: 706-277-1198

#### Upper School Leadership

Head of School - Gerald Porter  
 Head of Upper School - David McVicker  
 College Counselor - Amy Poag  
 Registrar - Judith Fleet

[chslions.com](http://chslions.com)